

Why  
we  
GROW

Y-WE





# Y-WE Grow

Our farm program is based at Marra Farm in the South Park Neighborhood on Duwamish and Coast Salish Lands, also known as Seattle, WA. **We center our program on the following four goals:**

- Connect reciprocally with land, each other, and ourselves
- Gain practical gardening skills, and grow fresh, culturally-relevant produce to share with community
- Learn how to disrupt racism and injustice in the U.S. food system by investing in local food sovereignty
- Gain skills for interdependence, such as: woodworking, plant medicine, and ecosystem restoration

We wanted to share a little piece of our time at the farm with community.

Through this zine, we express all that we love about Y-WE Grow and this community through art, pictures, and words. We

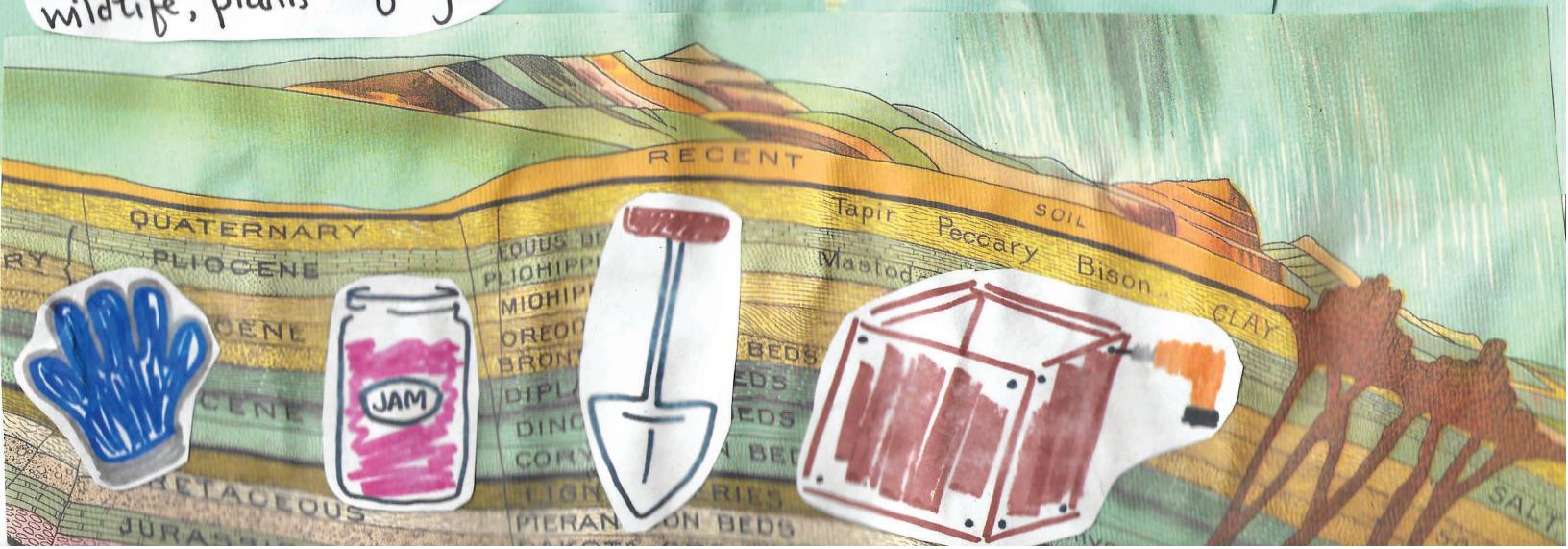
hope this inspires community to connect with each other and the land. Please enjoy!

**LEARN MORE AT  
[Y-WE.ORG/GROW](https://www.y-we.org/grow)**





Willingness to learn  
and share with  
community. [Community  
being the people, land,  
wildlife, plants + fungi ♡]





# Ode to the flowers

Ariana Liboon

THIS IS WHY WE GROW

in the eyes of nature,  
we blossom

The trees wave their golden greens  
As your rays of sun reflect what  
makes you different

Not everyday did the clouds slowly part  
Nor the birds fly high as before

Or when the wind slightly  
shakes the grass

And the stillness by me blues

happened not when the  
bricks on my head

Say to "carry me more"

Or when every locked thing  
is an open door

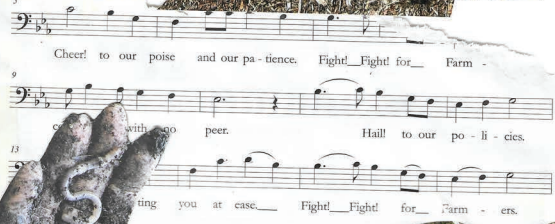
But when I stand here  
at this vast, free field  
And sitting here quietly  
As I look at you.



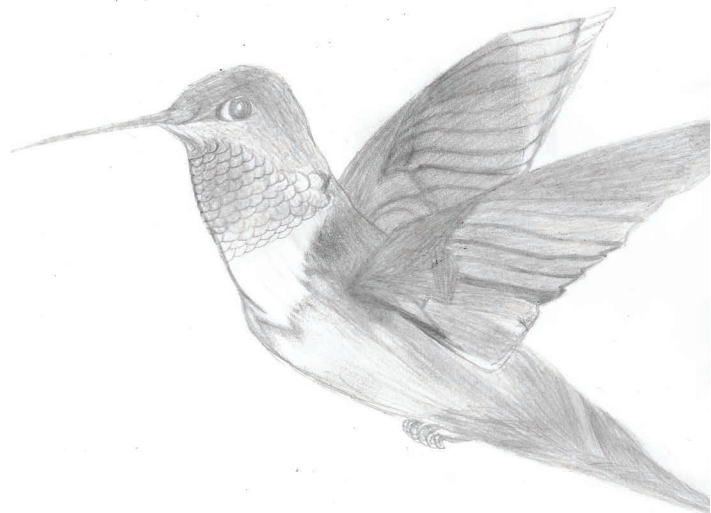
amw...



I honor  
the land  
I am a part of  
the land  
I protect the  
land  
I nourish  
the land



Niken





in this temple



my body



my aunty



blends and grinds



plants into butter



into tea



yarrow gifted



from her garden



to me



we built  
these gardens  
to share  
with you



Y WE  
GROW

W/NANCY H.

HOW CLIMATE  
CHANGE & POLICY  
AROUND CLIMATE CHANGE  
IMPACTS BIPOC COMMUNITIES

REDLINING &  
ENVIRONMENTAL  
RACISM GO HAND IN  
HAND.

WHY ISNT  
GOVERNMENT  
DIRECTING  
RESOURCES TO  
HEALTH  
TO LIFE?

TREAT THE EARTH WITH  
THE LOVE YOU SHOW TO  
EACH OTHER.

THOSE  
WORKING  
DIRECTLY  
WITH THE  
EARTH

WHAT DOES  
ENVIRONMENTAL  
JUSTICE MEAN?

INDIGENOUS SOVERGNITY IS  
THE RIGHTS OF THE LAND

WE NEED  
EVERYONE!

— TO TELL OUR STORIES —

ACTIVISTS

ORGANIZERS

RESEARCHERS

ARTISTS

LAWYERS

POLICY  
MAKERS

PUT RESOURCES  
BACK INTO COMMUNITIES

STANDING UP  
FOR THE RIGHT  
TO HEALTH!

IF YOU ARE CENTERING OTHER  
FOLX, YOU ARE A PART OF THIS MOVEMENT

WATER IS LIFE

WHERE DO YOU GET YOUR WATER?

CEDAR  
RIVER



WHAT DO YOU  
VISUALIZE 10 YEARS  
FROM NOW  
IN A JUST FUTURE

MORE ACCESS TO  
HEALTHY FOODS

WELCOMING  
AREAS

FOR  
COMMUNITY!

WHAT WILL IT TAKE  
FOR BLACK & BROWN  
BODIES TO TRULY FEEL SAFE?  
IN RURAL SPACES?

As long as  
you have LOVE  
YOU ARE DOING THE  
WORK

ROOF TOP GARDENS  
& CAFES!

COMING TOGETHER  
TO VISION OPENS  
EACH OTHERS EYES  
TO NEW POSSIBILITIES

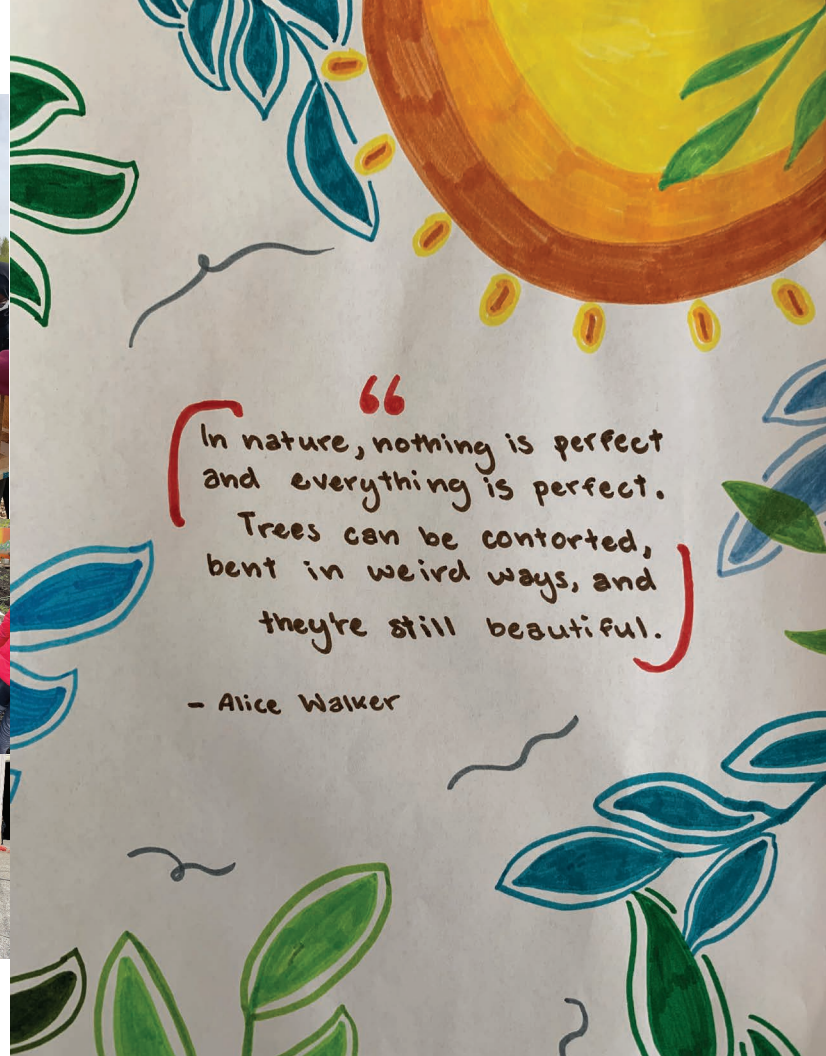
ORGANIC PRODUCE  
AVAILABLE  
EVERYWHERE

NEW WAYS TO  
TRAVEL!

FARM  
TO TABLE

COMING TOGETHER TO  
SHARE THE VISION IS A  
PART OF MAKING IT HAPPEN





“In nature, nothing is perfect  
and everything is perfect.  
Trees can be contorted,  
bent in weird ways, and  
they're still beautiful.”

- Alice Walker



happy  
community  
compassion  
passion  
open  
plants  
farm  
community  
happy  
people  
together  
passion  
cam







# Special Thanks



## TO ALL OF OUR PARTICIPANTS AND MENTORS:

Ahsha, Aimee, Aja, Aliyah, Anika, Ariana,  
DP, Eliana, Fatra, Gabie, Jaydalyn, Kendall, Maria,  
Ngocanh, Nikai, Nimat, Romi, Trinity, Ysabel, and Nancy!

## COFACILITATORS:

Tayah and Neli

## GUEST FACILITATORS:

Shannelle of Percussion Farms,  
Melissa, Sienna, and Anjilee of La Matriarca  
Woodworkings,  
Val and Crystal of Dirt Corps,  
Lashannah of A Sacred Passing,  
and Artist Mari Shibuya

